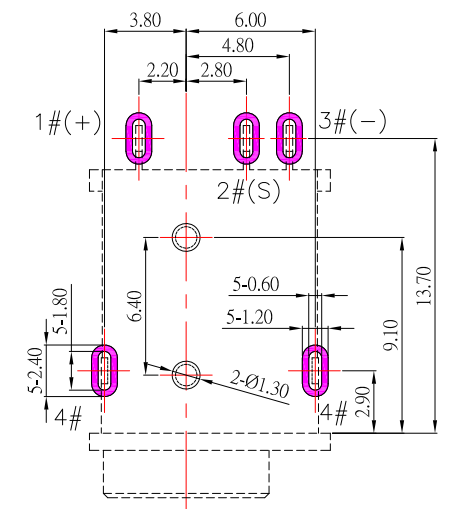
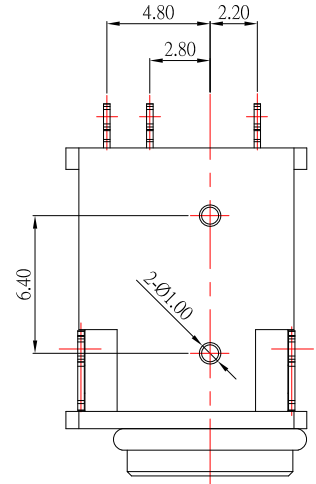
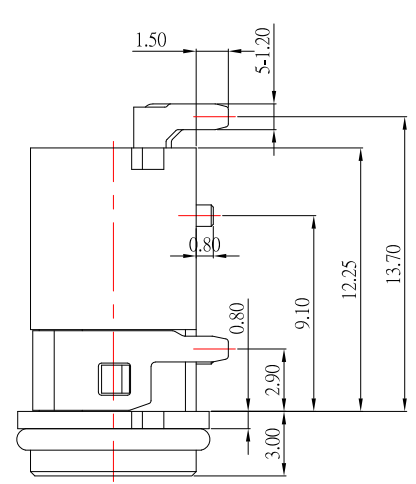
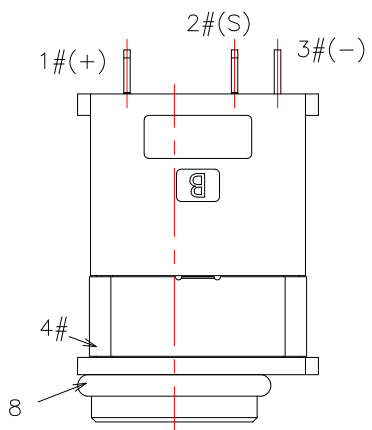
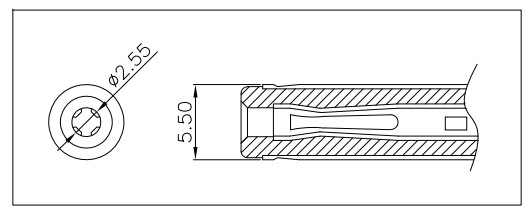
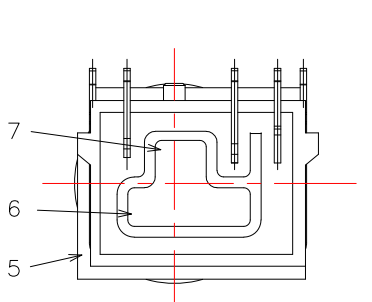


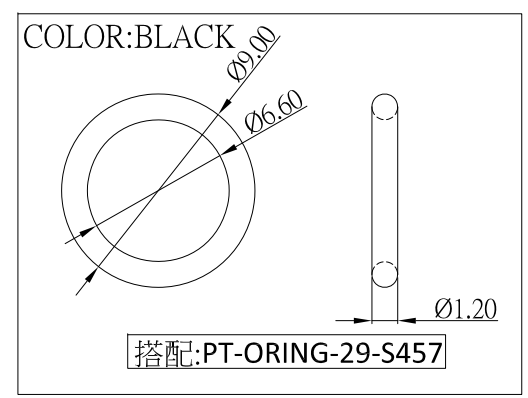
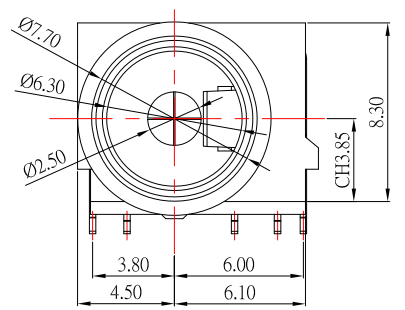
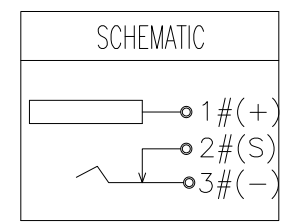
IPX7



P.C.B LAYOUT

SPECIFICATION

1. Rating : DC 24V , 5.0A
2. Contact resistance : $\leq 50m\Omega$
3. Insulation resistance : $\geq 100M\Omega$
4. Withstand voltage : 500VAC
5. Insertion and extraction force : 3-35N
6. life test : 5,000 cycles



ITEM	NAME	Q'TY	DESCRIPTION
8	WATERPROOF RING	1	SILICONE; BLACK
7	GLUE	1	EPOXY; BLACK
6	BACK COVER	1	PA10T; BLACK
5	HOUSING	1	PA10T; BLACK
4	TERMINAL 4#	1	SUS; NICKEL PLATING
3	TERMINAL 3#	1	BRASS; NICKEL UNDERPLATING OVERALL, Au PLATING ON SOLDER AREA
2	TERMINAL 2#	1	PHOSPHOR BRONZE; NICKEL UNDERPLATING OVERALL, Au PLATING ON THE WHOLE
1	CENTER PIN	1	BRASS; NICKEL UNDERPLATING OVERALL, Au PLATING ON SOLDER AREA

ITEM NO.	DESCRIPTION	DRAWN	DATE
4	更新Rating	Jack	042126
3	更新O-RING尺寸	Jack	033026
2	更新樣式	Jack	120925
1	更新Rating	Jack	070224

CONTACT 建倚科技股份有限公司
CONTACT TECHNOLOGY CORP.

TOLERANCE UNLESS OTHERWISE STATED :
 Up to 5 ±0.2
 Above 5 ~ 15 ±0.3
 Above 15 ~ 30 ±0.4
 Above 30 ~ 50 ±0.5
 Angle ±0.3

3RD. ANGEL'S

UNITS MM

DRAWN BY:	DATE	MAT'L	TITLE	JACK
Jack Lu	04/21/26		MODLE	防水 DC JACK
CHECKED BY:	DATE	FINISH	DWG NO.	DC-WP3090CH-2.5-S457
Jacky Chen	04/21/26		PART NO.	DC-WP3090CH-2.5-S457
APPROVED BY:	DATE	SCALE	1 : 1	
Tony Kao	04/21/26	SHEET NO.	1 of 1	

SIZE	VER
A4	R4